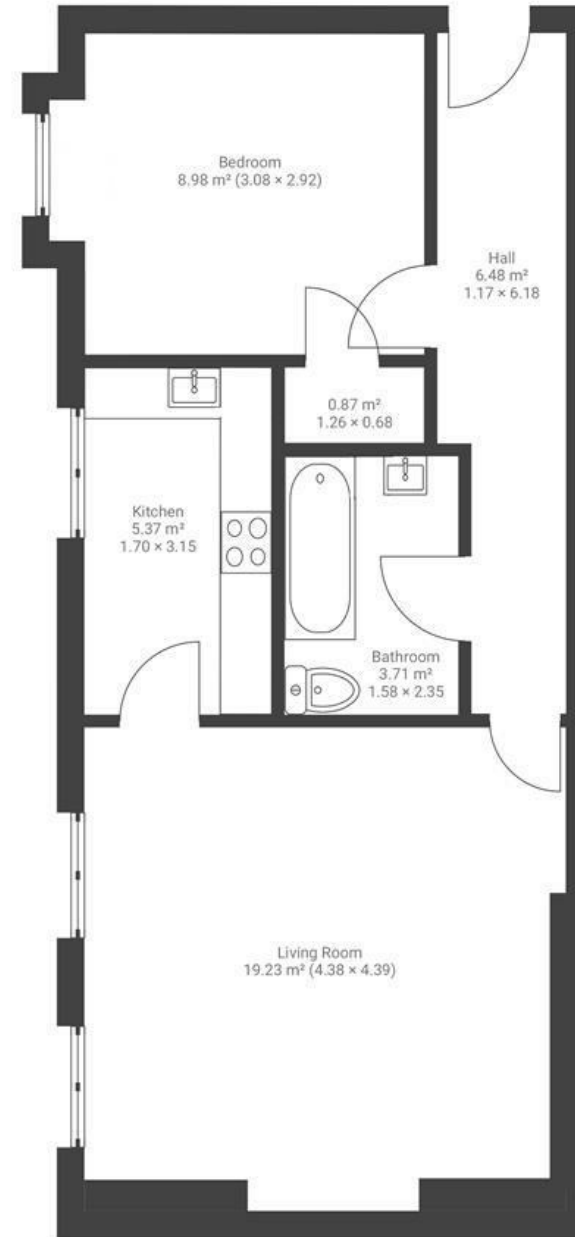


# Cleevewood House

## DOWNEND

APPROXIMATE FLOOR AREA  
45 SQM / 484 SQFT



SECOND FLOOR

**Boardwalk**

# Cleeve Wood , BRISTOL



£227,500



BS16 2ST



1 Bedrooms



1 Bathrooms

*"It's a beautiful converted manor house, grade 2 listed and set in gorgeous grounds. The river Frome basically runs through the front garden and the beautiful little hamlet of Frenchay is just a stones throw over the water. Our absolute favourite activity is to wander across Frenchay common on a hot summer's evening and get an after work pint at the pub before strolling back, petting Harry the horse in his field. The Frome Valley is a special haven and right on the doorstep."*

